



# Equipment Theft Alert

## Indiana Caterpillar Loader 10.16.2017

Between Monday October 9th and the theft discovery Monday October 16th, the below described Caterpillar Loader was stolen from a secured job site in the 2100 block of Sheldon Street, Indianapolis, Indiana.

Please forward this alert to anyone that may have witnessed activity in the area, and investigators working similar cases.

Indianapolis Metro Police Case: DP1701174470000

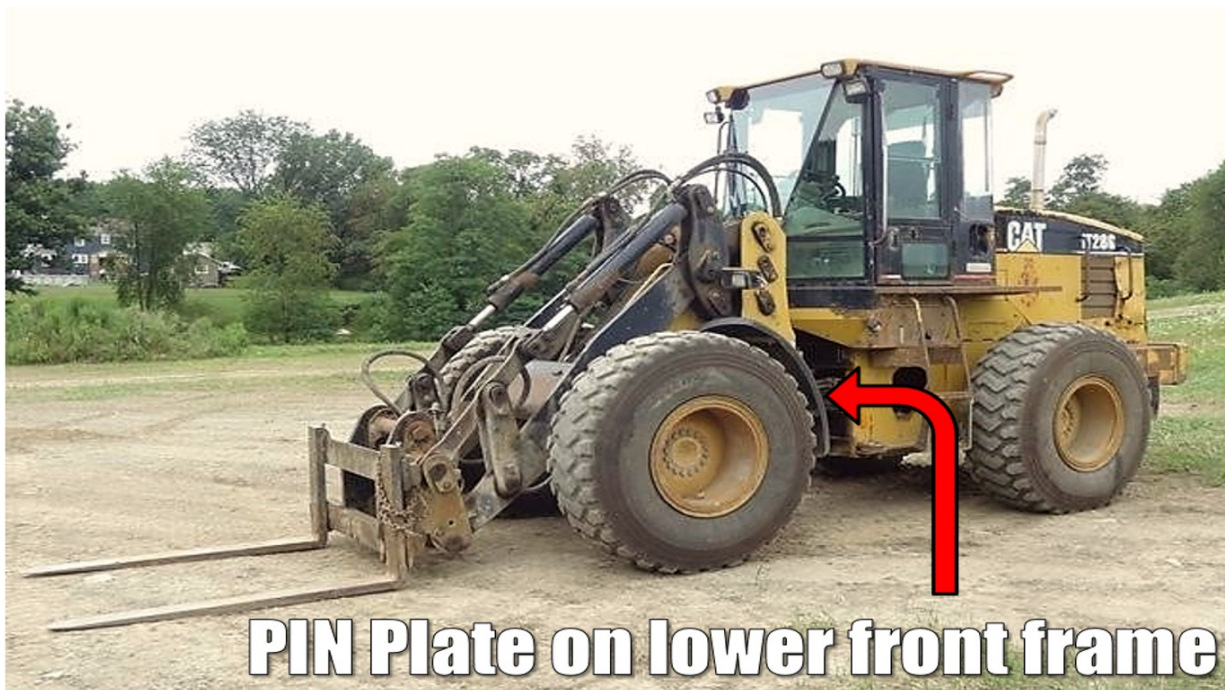
### Machine Details:

Make/Model: 2000 Caterpillar IT-28-G

Type: Articulated Loader/Tool Carrier

Product Identification Number: **8CR02476**

Pictured is an example of an IT-28-G for reference. The stolen machine was equipped with forks, as pictured. The machine PIN plate is inset from the left front tire on the lower rear portion of the front frame.



**Law Enforcement** - For access to NER's equipment ownership registration and theft records, and for machine identification assistance, call NICB: **800-447-6282**. For online access, see [www.ner.net/law-enforcement.html](http://www.ner.net/law-enforcement.html)

**Industry** – Report suspicious activity involving equipment – **Dial 911**

Register to receive NER's email alerts at: [www.ner.net/theft-alerts.html](http://www.ner.net/theft-alerts.html)

**National Equipment Register**  
545 Washington Blvd Jersey City, NJ 07310

866-663-7872

[www.ner.net](http://www.ner.net)